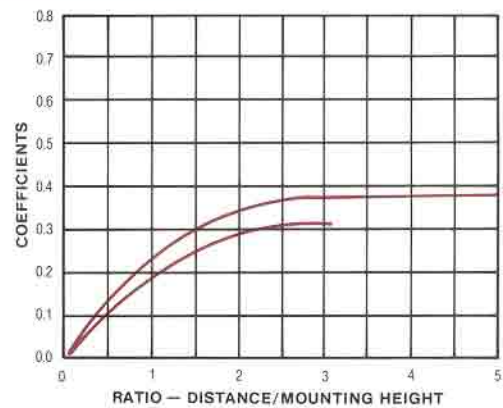
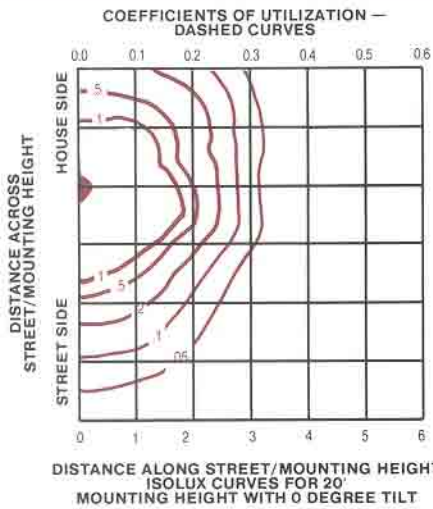
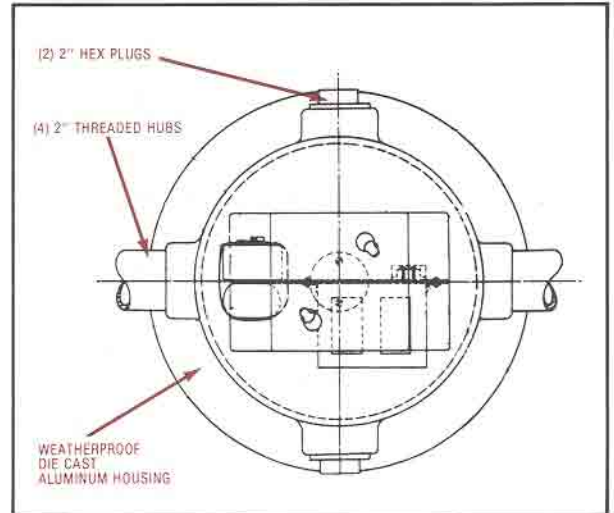
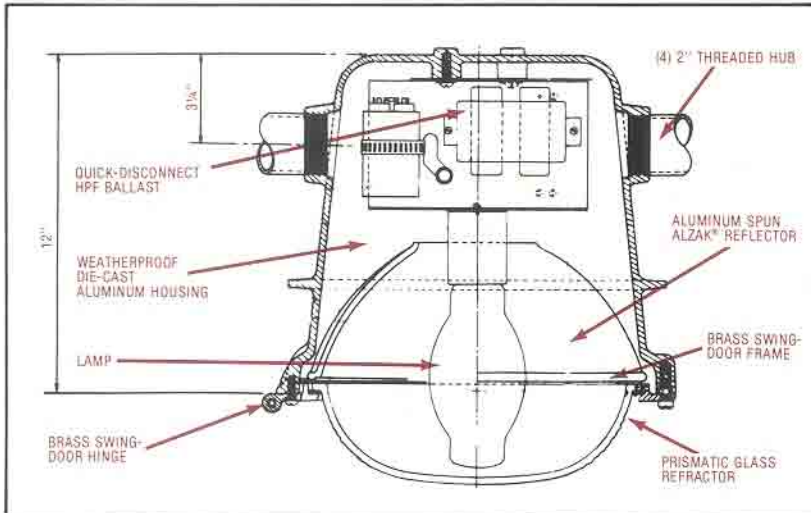


# SPECIFICATIONS



COEFFICIENTS OF UTILIZATION

RATIO — DIS/MH	0.0	0.5	1.0	1.5	2.0	2.5	3.0	3.5	4.0	4.5	5.0
STREET SIDE	0.00	0.13	0.23	0.31	0.34	0.35	0.36	0.37	0.37	0.38	0.38
HOUSE SIDE	0.00	0.11	0.20	0.27	0.30	0.31	0.32				

CONVERSION FACTORS FOR VARIOUS LAMPS AND MTG. HEIGHTS

LAMP TYPE	LUMENS	MOUNTING HEIGHT				
		16.00	18.00	20.00	22.00	25.00
100-W CLR HPS	9500	1.56	1.23	1.00	0.83	0.64
150-W CLR HPS	16000	2.63	2.08	1.68	1.39	1.08
70-W CLR HPS	5800	0.95	0.75	0.61	0.50	0.39

## ORDERING INFORMATION

CATALOG NUMBER	SERIES	WATTS	LAMP	VOLTAGE	LENS
2000SFT-70-S-MLT-G	2000	70	HPS	MULTI TAP	GLASS
2000SFT-100-S-MLT-G	2000	100	HPS	MULTI TAP	GLASS
2000SFT-150-S-MLT-G	2000	150	HPS	MULTI TAP	GLASS

\*ALL HPS BALLASTS ARE QUAD TAP (120/208/240/277)  
IF 480 VOLT IS REQUIRED PLACE AN "X" BEFORE 2000

\*ALSO AVAILABLE WITH LEXAN LENS