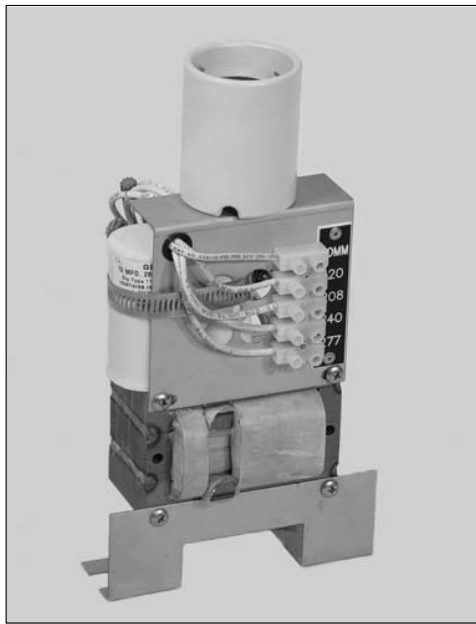


LUMINAIRE

SEQUOIA LIGHTING SYSTEMS

CONVERSION KIT

DESIGN
KIT05



SPECIFICATIONS

Ballast Name: Conversion kit post top bolt down type

Description: Post top or pendant type conversion kit. Ballast kit is completely wired and assembled with porcelain socket. Ballast kit mounts to existing post top pole or pendant luminaire assembly.

Bracket Material: Steel Pre-Galvanized

Ballast Type: All types (See ordering logic sheet)

Wattage/Lamping:

- Mercury Vapor (100, 175 or 250 watt)
- High Pressure Sodium (70, 100, 150, 200 or 250 watt)
- Metal Halide (100, 175, 250 watts)
- QL Induction (55, 85 watt)
- Incandescent

Distribution: Symmetric or Asymmetric

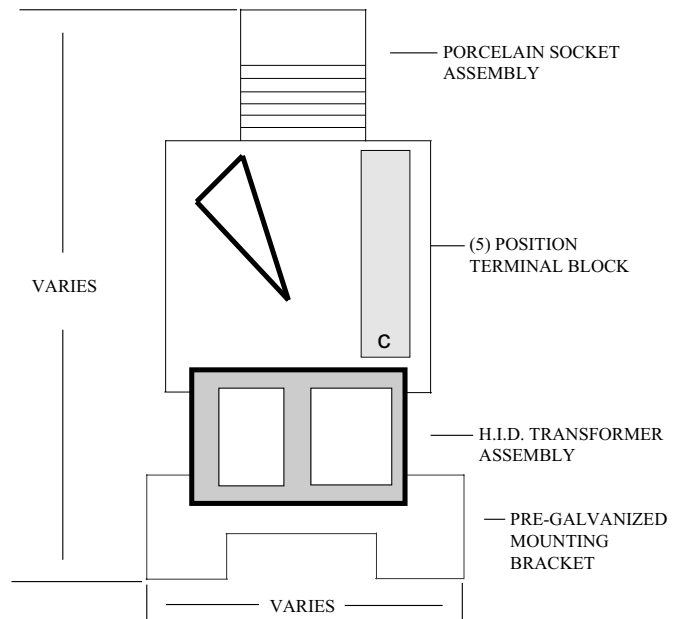
Voltage: 120, 208, 240, 277 or 480 volt

Options: House side shield / Photo control / Internal glass refractor

Dimensions: All dimensions are nominal

Photometry: Available upon request on I.E.S. formatted disk

Warranty: Fixture shall be warranted to be free of defects for two years. Ballast components shall carry the ballast manufacturer's limited warranty



FINISH

Finish: All hardware is plated and all brackets are fabricated from pre-galvanized material

Please Contact Factory: All conversion kits are fabricated to allow lamp center to be located in the center of fixture. Please inform factory of existing fixture type

APPLICATIONS

- Parking Lots
- Perimeter Ltg.
- Transportation Terminals
- Office Complexes
- School Campus
- Shopping Malls
- Hotels/Motels
- Industrial Sites
- Commercial Developments
- Waterfront Areas
- Parks/Recreational Areas
- Architectural Landscape Ltg.

SEQUOIA LIGHTING

CORPORATION

MANUFACTURERS OF QUALITY LIGHTING PRODUCTS

13644 George Blvd, Suite 1, Victorville, CA, 92394 (760) 246-5213 FAX (760) 246-5294 www.sequoialighting.com

LUMINAIRE

SEQUOIA LIGHTING SYSTEMS

BALLAST KIT

ORDERING NUMBER LOGIC

Example: KT05 -M1 -6 -0 -0 -0 -5 -GC -BL -O -C

(A) (B) (C) (D) (E) (F) (G) (H) (I) (J) (K)

(A) DESIGN I.D. Top Right Corner of Cutsheet

(B) BALLAST TYPE

High Pressure Sodium

- 20 = 120V High Power Factor (150W and below)
- 21 = 120V Regulated High Power Factor
- 22 = 120V Normal Power Factor
- 23 = 240V High Power Factor
- 24 = 240V Regulated Power Factor
- 25 = 240V Lag Norma Power Factor
- 26 = 208V Regulated Power Factor
- 27 = 277V Regulated Power Factor
- 28 = 480V Regulated Power Factor

M1 = Multi-volt Regulated High Power Factor
Wired 120V

H6 = 6.6 AMP

Metal Halide

- 30 = 120V CWA High Power Factor
- 31 = 240V CWA High Power Factor
- 32 = 208V High Power Factor
- 33 = 277V CWA High Power Factor
- 34 = Multi-volt CWA High Power Factor
Wired For 120V

M6 = 6.6 AMP

Mercury Vapor

- 02 = 120/240 Regulated High Power Factor
Wire For 120V
- 03 = 240/480 Regulated High Power Factor
Wire For 240V
- 04 = 208V Regulated High Power Factor
- 05 = 277V Regulated High Power Factor
- 06 = 120V Lag Auto Normal Power Factor
- 07 = Multi-volt Regulated High Power Factor
Wired For 120V
- V6 = 6.6 AMP

QL Induction (Please Specify Kelvin Rating)

- Q1 = 120V
- Q2 = 240V
- Q6 = 6.6 AMP

Incandescent

IN = Specify Wattage

(C) LAMP WATT AGE

- 1 = 35 Watts
- 2 = 50 Watts
- 3 = 55 Watts
- 4 = 70 Watts
- 5 = 85 Watts
- 6 = 100 Watts
- 7 = 150 Watts

8 = 165 Watts

9 = 175 Watts

10 = 200 Watts

11 = 250 Watts

12 = 310 Watts

13 = 400 Watts

00 = 1000 Watts

15 = 1500 Watts

(D) SOCKET TYPE

0 = Medium

1 = Mogul

(E) INTERNAL REFRACT OR

0 = None

1 = L1 (Glass)

2 = L2 (Chimney / Lantern only)

3 = L3 (Louver)

4 = L4 (Lamp style / Lantern only)

(F) MOUNTING BRACKET (DIMENSIONS)

0 = Match Existing Luminaire 1
= Bolt Down Type

2 = New Luminaire (Per Plan)

(G) MOUNTING STYLE

0 = Post Top Style Luminaire

1 = Pendant Style Luminaire

(H) IES DISTRIBUTION (INTERNAL)

1 = None (If No Internal Glass Refractor) **2**
= Type II

3 = Type III

5 = Type V

(I) LAMP OPTION

0 = No Lamp Included

C = Clear Lamp Included

R = Rapid Start Lamp Included

F = Coated Lamp Included

M = Master Color Lamp Included

P = Protected Metal Halide
Lamp Included

W = White Son HPS Lamp Included

Q = QL Induction Lamp Included

(J) FUSE OPTION

0 = No Fusing

1 = (1) 5 Amp Fuse

2 = (2) 5 Amp Fuse

3 = (1) 10 Amp Fuse

4 = (2) 10 Amp Fuse

5 = (1) 15 Amp Fuse

6 = (2) 15 Amp Fuse

7 = (1) 20 Amp Fuse

8 = (2) 20 Amp Fuse

(K) HOUSE SIDE SHIELD

0 = None

1 = Yes

SEQUOIA LIGHTING

CORPORATION

MANUFACTURERS OF QUALITY LIGHTING PRODUCTS

13644 George Blvd, Suite 1, Victorville, CA, 92394 (760) 246-5213 FAX (760) 246-5294 www.sequoialighting.com

Revision